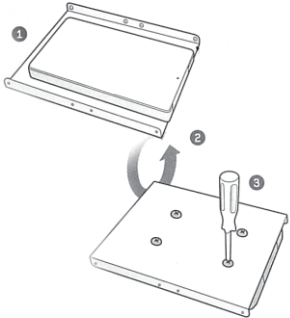


Longline is a leading and professional manufacturer of high-tech SSDs (Solid-State Drive) storages. We specialize in the development, manufacturing, marketing and sales of SSDs with innovative technology and customized solutions to our customers all over the world.

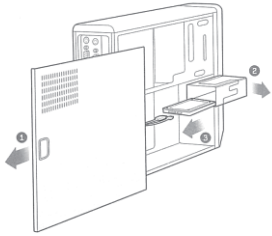
The Longline SSD is specially designed to improve the storage solutions of your PC. It is widely used in mainstream PCs, laptops, and industrial markets. Please follow the Longline SSD installation guide as follows:

1. 2.5" SSD installation guide for Desktop PC

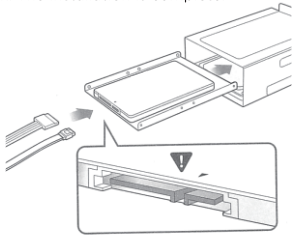
Step 1: Fix the SSD on the 2.5" hard drive bracket.



Step 2: Fix the bracket in the computer case with screws.

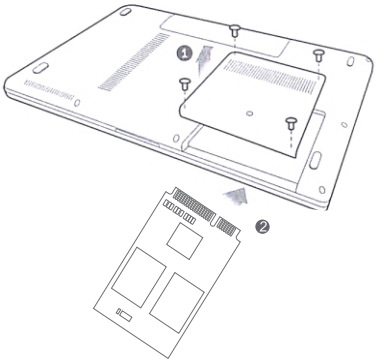


Step 3: Connect the power cable and the data cable to the disk. The installation is complete.

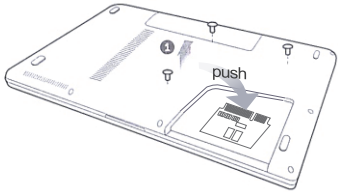


2. M-SATA SSD Installation Guide for laptop PC

Step 1: First find the corresponding interface on the main board and insert the M-SATA SSD with 45o direction into mSATA interface:



Step 2: Press the SSD down until the mSATA SSD golden finger connect it closely well and fix the mSATA SSD on the main board with screws.



Step 3: Finish installation and restart laptop



Longline SSD Warranty Policy

Longline guarantees that none of the SSD products have any problem with material or design. If any workmanship defect is proven by Longline to be attributable to a material or design fault of the product when under normal use, the warranty will provide repair services or replacement with equivalent equipment for any part of the product. The repaired or replacing item(s) under the warranty will be treated as they were sold by Longline and have same functions with those in new products (replacements may be a refurbished product or contain refurbished materials).

Warranty Period
Longline offers all of its SSD products with a 3 year warranty.

Scope of Warranty
Warranty terms only cover the hardware itself. Software contained in the product including pre-installed contents and contents stored by consumers (video, photos, and other data, etc.) is not covered by the warranty. Consumers must make a backup before sending their defective product for repair, or it will be erased once it is sent.

Warranty Conditions
1- Warranty period begins upon delivery of the product.
2- The whole product including all of its components is under the warranty of our Company.
3- In case the product fails within the warranty period, the repair period is added to the warranty period. The repair period of the product may not exceed 20 business days. This repair period begins as of the notification date of the product failure to the service station, or in the absence of the service station, the notification date of the product failure to any product seller, dealer, agent, representative, importer, or manufacturer.

The consumer may notify such product failure by telephone, facsimile, e-mail, registered mail, etc. However, the consumer is liable for proving such notification in case of any discrepancy thereof. In case the product failure cannot be eliminated within 10 business days, the manufacturer or importer is obliged to provide a product of similar specifications for the use of the consumer until the completion of the repair of the product.
4- In case of any product failure due to material, workmanship, or installation defects within the warranty period, the product will be repaired free of charge without any workmanship costs, replacement parts fees, or any other fees thereof.
5- Despite the fact that the consumer has used the right to repair and in case the product;
- failed for at least 4 times within a year as of the delivery of the product to the consumer and provided that it is within the warranty period, or failed for more than 6 times within the warranty period specified by the manufacturer and/or the importer and such failure caused continuous prevention for using the product, or
- the maximum repair period required has been exceeded, or
- in case the product repair is impossible as determined by a report to be issued by the service station of the Company, or in case of the absence of such service station, then to be issued by the seller, dealer, agent, representative, importer, or manufacturer, respectively, the consumer is entitled to replacement of the product free of charge, or a full refund, or a discount in the same ratio as the defect thereof.
6. Any failure arising out of the misuse of the product against the provisions contained in the user manual are excluded from the scope of the warranty.
7. For any issues arising out of and/or in relation to the Warranty Certificate, please apply to the Ministry of Customs and Trade, General Directorate of Consumer Protection and Market Surveillance.

longline

WARRANTY CERTIFICATE

Certificate Issue Date and Number :
Certificate Validity Date :
The use of this Certificate was authorized by the Ministry of Customs and Trade, General Directorate of Consumer Protection and Market Surveillance pursuant to Law no.4077 on Consumer Protection and Communicate on the Codes of Practice for Warranty Certificates, implemented as per the said Law.

MANUFACTURER OR IMPORTER

COMPANY : LONGLINE BILISIM TEKNOLOJILERI LTD. STI.
ADDRESS : Caglayan Mah. Park Sk. No: 29 K:7 Kagithane – IST.
TELEPHONE :
FAX :

COMPANY EXECUTIVE

Signature and Company Seal

PRODUCT

TYPE : SOLID STATE DRIVE - SSD
BRAND : LONGLINE SSD
MODEL :
LABEL AND SERIES NO. :
DATE AND PLACE OF DELIVERY :
WARRANTY PERIOD : 3 YEARS
MAXIMUM REPAIR PERIOD : 20 BUSINESS DAYS

SELLER

COMPANY :
ADDRESS :
TELEPHONE-FAX :
INVOICE DATE AND INVOICE NO.:

DATE-SIGNATURE-SEAL :

longline

SSD
SOLID STATE DRIVE
PRODUCT MANUAL

